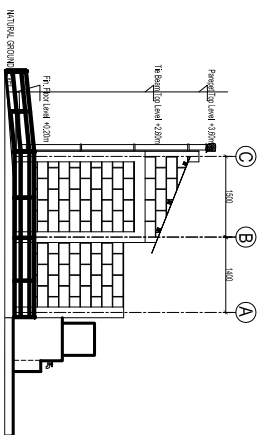
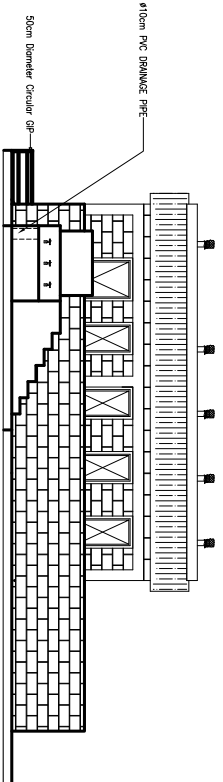
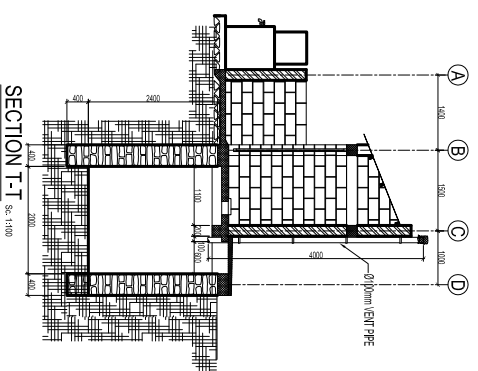
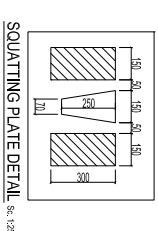
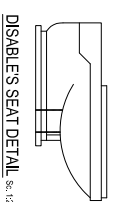
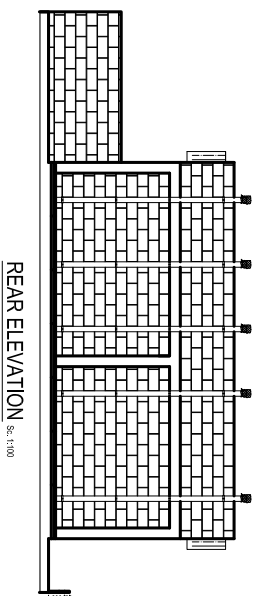
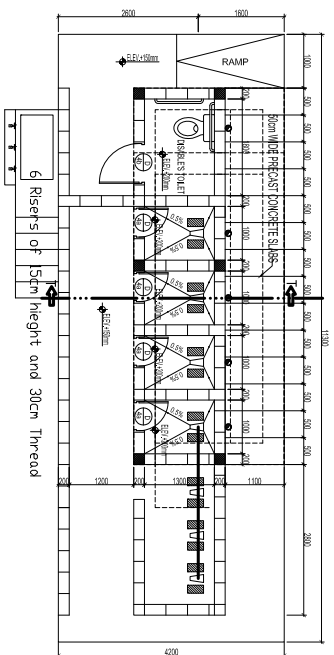
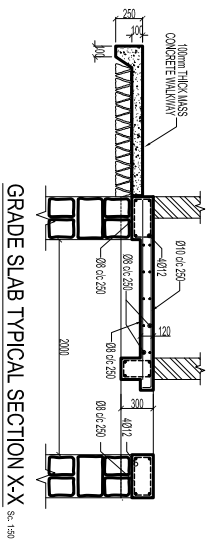
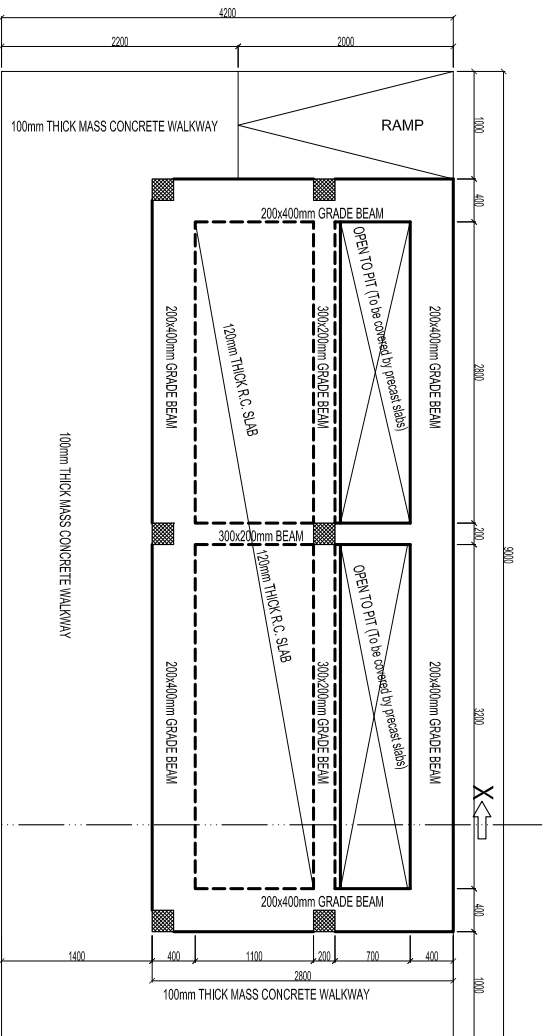
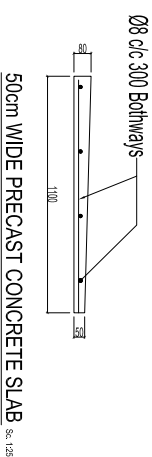


Fig. 3 - 4+1 ROOMS FEMALE STUDENTS' DRY PIT LATRINE

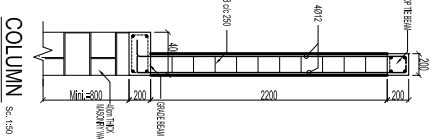


TYPE	SIZE	TYPE	SIZE
D4d	800x2200mm	D4d	800x2200mm
MATERIAL: GLASS FINISH: POLYURETHANE GLAZING: ALUMINUM		MATERIAL: GLASS FINISH: POLYURETHANE GLAZING: ALUMINUM	
QUANTITY	RIGHT HAND	QUANTITY	LEFT HAND
	3		1

DOOR SCHEDULE Sec. 1100



COLUMN & TOP TIE BEAM SECTION Sec. 125



N.B.: ALL DIMENSIONS ARE IN MILLIMETERS UNLESS OTHERWISE SPECIFIED.
 APPROVAL: _____
 DRAWING TITLE: **4+1 ROOMS FEMALE STUDENTS' DRY PIT LATRINE**
 PROJECT TITLE: **MOE STANDARD SCHOOL INFRASTRUCTURE**
 STATE OF ERITREA
 Ministry of Education
 DRAWING NO.: **A-03**
 DATE: _____
 SCALE: _____
 DRAWN BY: _____
 CHECKED BY: _____
 APPROVED BY: _____
 DECEMBER 2015